

ROUTE 1000

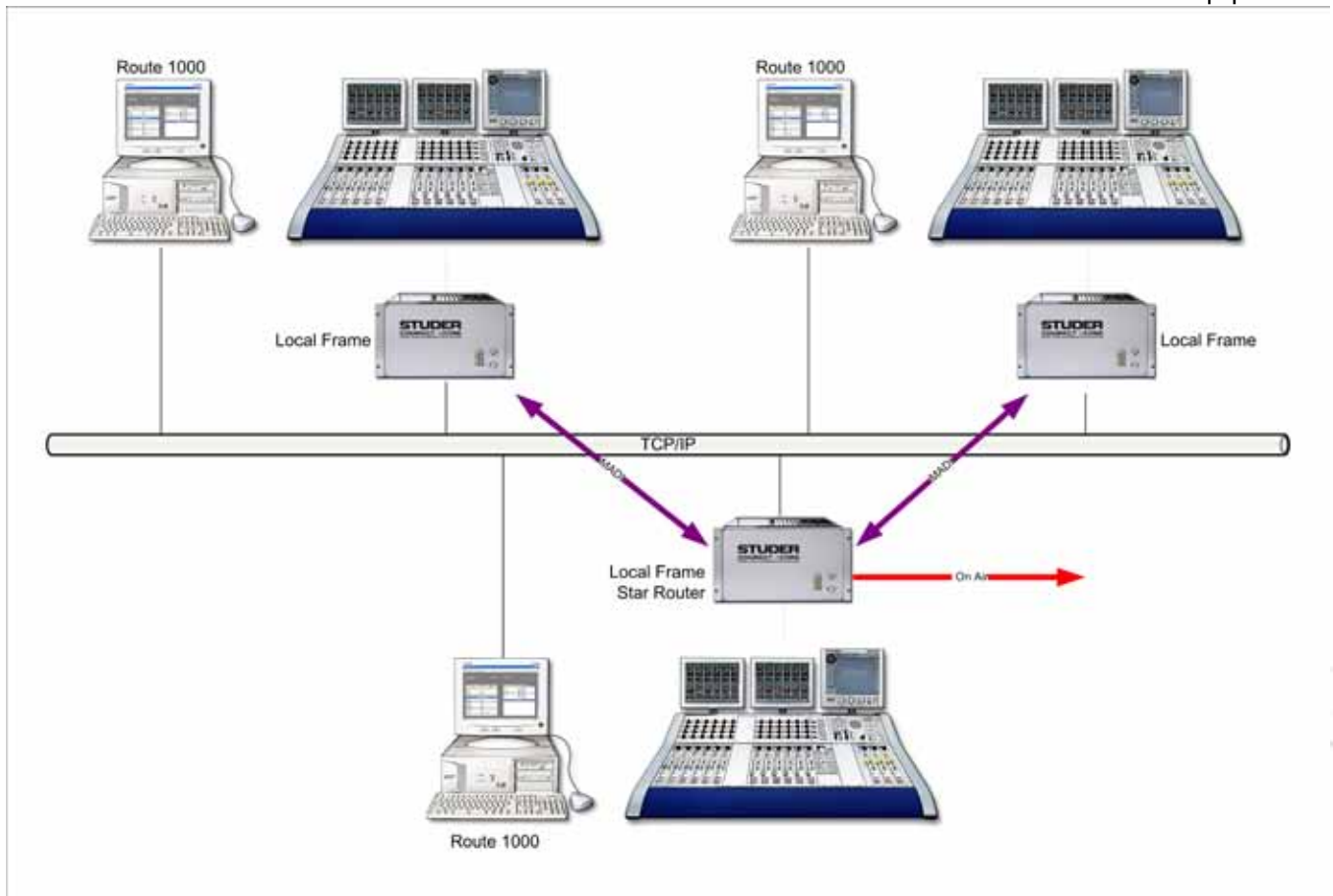
Simple yet efficient Audio Routing Control

The Studer Route 1000 software extends Studer's Route 6000 and SCore DSP platforms with a control application that's very simple to use, and which provides an easy and low-cost alternative to the more sophisticated control systems which require steep learning curves.

With the latest Studer Route 6000 & SCore Live DSP platforms offering up to 1728x1728 I/O capacities, very large scale routing systems can be deployed and controlled using Route 1000. Any input can be connected to any output which is part of the system.

The Studer Route 1000 at a glance

- Ergonomic and easy to learn
- Graphical view of Matrix
- Controls either Compact SCore or SCore Live in conjunction with D21m I/O racks
- Monitoring of all connected systems
- Runs on standard IT equipment



The Route 1000 is a 'ready to use' system. There's no need for extensive training, so users will be able to operate the system quickly and easily.

Whether you have just a single Studer router, or several On Air 3000 mixing desks, you have instant control over all input and output patches. It is also possible to run several Route 1000 applications in parallel.

The Route 1000 application software runs on standard PC's and IT infrastructure and controls both the Route 6000 router and Studer OnAir 3000 mixing desks I/O systems, and is ideal for the operation of small to medium routing systems.

ROUTE 1000

Simple User Interface

The graphical interface is very intuitive to use, and requires very little training for operators. This allows the user to be focussed on the creative programming rather than equipment programming.

Full cross-point routing is provided, with any input assignable to any output.

The user always has a readily available overview of all cross point status with just a few mouse clicks.

Most functions are just a mouse click away

- Connect or disconnect single inputs or outputs
- Connect or disconnect input groups
- Disconnect single patch points out of a cross point group
- Handle inputs of distant mixing desks
- Lock outputs from changes
- Integration with On Air 3000 applications
- Integration with Route 6000

Reliability

Route 1000 and Studer's SCore DSP platforms have an excellent reputation for high reliability. Even in the event of a PC situation that requires the application to be re-started, the DSP cores will preserve their cross point status.

